

The Mountain Community Gazette

Issue 3 2008
Summer 2008

Your Community Website - Hits the Internet

Visit the website at : <http://www.anarchistmountaincommunity.com>

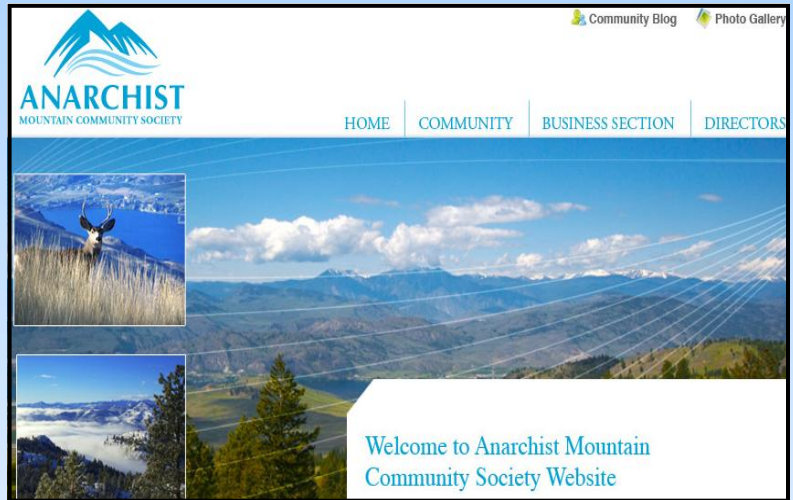
With a lot of encouragement from the Board of Directors, and photos sent by many of our Members, the Anarchist Mountain Community Society Website is ready to be used by our community. This site will be the main method of communicating with you in the future, and will become our way keeping you informed as to what is happening on the mountain.

The website has a few features that make it useful to you as a member, and even allows for members to interact with each other.

The Community page, is where we will post all announcements of what is happening. This is where we will update members on current news and events that are happening on the mountain. Take the time to read about the seminars that have been happening on the mountain, and the work of the Stewardship Agreement Committee. This agreement has now been signed between Regal Ridge and the Community Society, and provides the Society with a role in advising the land owner in how their conservation lands will be managed on Anarchist Mountain. The Board plans to continue our discussions with Regal Ridge in the near future to strengthen this Stewardship Agreement, and make sure that the community has an on-going role in protecting these valuable lands forever.

The Business page is where you can get all the pertinent information about your Society. Here you can download the By-Laws & Constitution of the Society, access Board Meeting agendas and minutes, get a Financial Report, a copy of the Stewardship Agreement, and access past and current Newsletters. In the future we will notify you that a new newsletter or set of minutes is available on the website, rather than push those documents at you. You can download them and read them on your own time schedule.

The Directors page provides information about the current Board, and their backgrounds. Finally, we have created a Blog, accessible from the website. This is where you can communicate with other Members, about anything you want, without being bombarded with spam emails. We will be activating a Photo Gallery soon, with your pictures on it. If you have any good shots, they can be submitted to Mark McKenney, at mckeney@xplornet.com



- **The Community Society website hits the internet in late August 2008**

- **Society members will have access to all the relevant documents of the Society to read on your own schedule**

Stewardship Agreement Signed	page 2
Tree Planting a Success	page 3
Interface Fires	page 4
Pine Beetle Update	page 5
Brush Burning Area	page 6
Winter Moon Party	page 7
Summer BBQ	
Kelly Property Tree Plantation Project	
Membership Form	

Stewardship Agreement Finalized

The AMCS wants to thank Ron Palmer, Naga Terada, and Bonnie Douglas for their efforts in negotiating a Stewardship Agreement with Regal Ridge (RR). In February and March this committee met with Adrian Erickson, President of Regal Ridge to discuss an agreement that would allow the community a role in the management of conservation lands owned by RR. That agreement was signed in June, providing our community with a unique opportunity to have a voice in how conservation lands are managed in the future on this mountain.



Here are the highlights of this first Stewardship Agreement .

The conservation lands owned by Regal Ridge consist of about 2,300 acres of lands set aside during the zoning process the developer went through in between 1999—2003. There are two distinct groupings of conservation lands on the mountain - the northern conservation lands adjacent Bull Moose, Sasquatch and the Kehoe properties in the Wapiti Subdivision. There are also the southern conservation lands - which are much more environmentally sensitive, which are located on the south side of Highway 3, below the McGuire, Grizzly, Black Tail, Big Horn, Peregrine, Eagle and Mule Deer subdivision of Regal Ridge to the US border.

The agreement sets the role of the AMCS as one that is advisory in nature. This is as opposed to “managerial” in nature which has liability issues associated with such a relationship. Your negotiating team recommended that this first agreement take a conservative approach and make sure that we don’t run into any legal issues that could jeopardize the future of the Society. The AMCS will form an “advisory committee” to make recommendations to the owner of the conservation lands, concerning any matter of interest. This committee will be comprised of 1 member appointed by the land owner, and 2 members appointed from the Society members list. This committee has not yet been struck—if you are interested in volunteering please contact any Director to let us know your willingness to get involved.

The agreement recognizes that the owner has the right to continue to do things that are permitted under the existing covenant agreement with the Regional District. These are things like fire protection, brush clearing, maintaining existing roads and trails, wildlife and plant enhancement, and the like. No “development” is allowed, and the agreement acknowledges that the Society has a right to comment on any proposed ideas that we think fringe on development rather than conservation lands maintenance activities. The developer has agreed to inform and seek the advice of the Society on any work proposed to be done in the conservation lands.

An important feature of the Stewardship Agreement recognizes that the Society may have ideas for conservation projects, which will require funding. By April 1 of each year, the advisory committee can submit proposals and a budget to Regal Ridge for projects to be embarked upon. Regal Ridge will consider these ideas and agree to funding as appropriate. This is a great opportunity for our Community to do conservation projects - such as create interpretive materials, foster flora and fauna conservation efforts, biological or environmental studies, fire mitigation efforts, recreational features like cross country ski trails or advancing the hiking trail network, or other ideas you may have. If you have an idea for a project please let a Director know about your thoughts. We will consider projects based upon their merits - and always keeping in mind that these lands are meant to stay in their natural state, and not become burdened with interference from us humans.

At the present time, the covenant agreements in place are agreements registered on title, between the Regal Ridge company and the Regional District of Okanagan-Simikameen. In discussions with Area A Director, Pendergraft and with Adrian Erickson, there is interest in making the Community Society a third party to these agreements. The advantage of this is that this improvement in the official covenant agreements would bring a not-for-profit community interest into the agreements in-perpetuity. Should additions, or new covenant agreements be brought forward this 3 way agreement format may allow the Community to always have an interest in how any new conservation lands are handled in the future. The Board of Directors is considering how this may work out in the future and will keep you informed.

The Anarchist Mountain Community Society is very pleased with the positive response we have received from Adrian Erickson, and Regal Ridge in getting an agreement signed. We see this as a first step in a long term relationship that allows the Community a voice in protecting these sensitive conservation lands. A copy of the Stewardship Agreement is available in the Business section of our website.

• The conservation lands owned by Regal Ridge consist of about 2,300 acres of lands

• This is a first step in a long term relationship that allows the Community a voice

Community Projects and Activities

Tree Planting - A Hit

In early May, twenty-eight neighbours got together for the first conservation project of the Society. With spades, shovels, prods and doggies AMCS members and neighbours hit the slopes with seedlings in hand. The Society purchased about 4,000 ponderosa pine seedlings and asked folks to come out and help out. The response was overwhelmingly positive.

On one Saturday morning the Society got over 3,800 little trees in the ground. We are really pleased to say that the trees were in strong demand by people all over Anarchist Mountain.

Members and friends helped out by planting over half of the seedlings on lands that were burned over in the 2003, Anarchist Mountain Fire. The folks that own those properties were very appreciative of the help they got from their neighbours, and were blown away that this "no-cost" project was paid for by your Community Society. Bravo to everyone!

As a follow up to this story, although everyone living on Anarchist Mountain probably didn't appreciate it - the cool and rainy weather we experienced in late May and June was just what those little trees needed. In examining planted areas we are delighted to let you know that the success rate of these seedlings seems quite high - with certainly a majority of them surviving their first heat waves of July and August.

This was a great start to our community conservation efforts. We are now thinking much bigger - and have been discussing a serious tree planting project with Regal Ridge. See the article on Kelly Tree Plantation Project on page 6. Every tree planted is a feather in the hat of conservation efforts. Trees reduce erosion, improve bird and animal habitat and have the benefit of taking carbon dioxide out of the air, making a contribution to removing green house gases from the atmosphere. We can ' clean up the planet from Anarchist Mountain, but we can make our tiny contributions where possible.



Interface Fire Always a Concern



On the fifth anniversary of the 2003, Anarchist Mountain Fire, it is good to reflect on how serious fire prevention and fuel control is everyone's business on the Mountain. The 2003 fire was likely caused by sparks from a truck. The outcome was devastating for 3 families that lost their homes, and over 1,300 acres of lands damaged. Jim Modeshaw, District Fire Control Manager spoke to the Society members at our May beetle seminar. He told us we were lucky - in that the Ministry had airplanes already in the air that day, just in case a fire broke out. Their quick response saved many homes. Jim showed us chilling pictures of this fire in full bent fury and reminded us that the best defense for residents is to remove the fuel sources. That means trimming trees, removing brush and generally not allowing combustible fuels to accumulate around your property.

Also - don't be shy to call Fire Chief Joe Simose (250-498-1121) or 911 if you see smoke on the mountain. Lets all keep a sharp watch ; and remember no campfires or open fires until further notice.

• 28 neighbours planted nearly 4,000 trees in May

• Call Fire Chief Joe Simose (250-498-1121) or 911 if you see smoke on the mountain

Community Projects and Activities

Are Nasty Critters on their Way?



The Society organized an evening meeting with two pine beetle experts in May. Ellen Simmons is the Mountain Pine Beetle (MPB) Outreach Coordinator, for the Ministry of the Environment for this region. Also speaking on beetles was Mickey Werstiuk, Manager of the Southern Interior Beetle Action Coalition. A third speaking at this seminar was Jim Modeshaw, Fire Services Manager, BC Ministry of Forests; who spoke on interface fires and fire protection.

This nasty critter has claimed 13 MILLION hectares of pine forests in BC, out of a total 60 million Ha of licensed timer lands. This is a devastating infestation that has effected the forest industry in BC, and the economy of the Province in general. The experts told the meeting that the province predicts that up to 60% of all the ponderosa pines and lodge pole pine in BC may be destroyed by this insect.

Mountain pine beetles are not new to BC. These insects have always been part of the forest ecological cycle, but recent warm winter seasons have prevented the destruction of the insect. Warmer climate is the friend of this beetle and they have done an amazing job at adapting to their new warmer environment. There is also a population of western pine beetle that is native to this area of BC, but their numbers are not out of control at this point in time.

So far infestations in Kamloops, Kelowna, the Thompson Valley and as far south as Penticton and Okanagan Falls have been documented. In some of these communities, massive pine kills have occurred, with many beautiful trees lost. Is this infestation likely to come to Anarchist Mountain -- well the answer is likely, but perhaps not. Adrian Erickson was at the seminar and he spoke about the diversity of tree species at the higher elevations on the mountain. Adrian, commented that his Environmental Manager has been monitoring for mountain pine beetle for the past two years and none have been found yet. The Ministry experts weren't quite as optimistic about our mountain being spared. So what is their advice to residents?

Firstly, watch for the signs of infestation. The new adult bugs take flight usually twice per year, in late June / early July and then once last flight in August. Experts tell us that this year, with cool weather in the spring time, these flights of adults looking for places to lay eggs was pushed back to July and late Aug / September. The swarms of bugs can usually be seen, in the hundreds of thousands or millions of adults on the move. In attacked trees the beetles create galleries, where eggs are laid and the larvae develop.



Figure 2: "Pitch tubes" indicating trunk attacks by MPB. Success of the attacks is confirmed by looking under the bark with a hatchet for beetles, their tunnels and/or bluestaining.

Once a tree is successfully attacked it is too late to save that tree. The insect kills the tree by developing a fungal infection - readily seen as a blue stain in the sapwood. If a MPB tree is cut down the blue staining is readily seen.

Any infected trees should be cut and burned whenever possible. MPB damaged trees begin showing damage about 8 - 10 months after infestation, and will not normally recover, unless the tree is very healthy. Chemical treatments have to be done by commercial pesticide companies, as the chemicals used are not licensed for home users.

One treatment to is Verbonone, a pheromone that sends out a chemical signal usually transmitted by adults beetles that says — "tree occupied , go elsewhere".

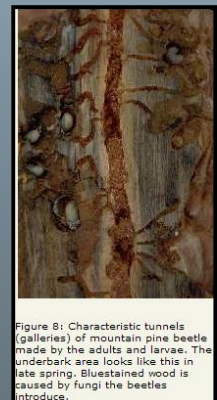


Figure 8: Characteristic tunnels (galleries) of mountain pine beetle made by the adults and larvae. The underbark area looks like this in late spring. Bluestained wood is caused by fungi the beetles introduce.

The Society is in discussions with the manufacturer of Verbonone to make a wholesale bulk purchase and re-sell the treatment to members, as no cost to the Society. We believe we can get it for less than the current retail price. More information will follow about this if we can cut a good deal.

- Beetles have claimed 13 MILLION hectares of pine forests out of a total 60 million Ha under timber license in BC

- Society is in discussions with the manufacturer of Verbonone to make a bulk purchase

Community Projects and Activities

Common Brush Burning Area Considered

The Society has approached Fire Chief - Joe Simose and Regal Ridge to discuss whether setting up a common brush burning program might have some legs. The idea is that some residents feel uncomfortable in doing their own brush burning. This may be because some residents don't have suitable water supply yet set up, or that the capacity of their home water hoses is not sufficient to really control a fire should it get away on them.

The Society is considering organizing a location and some dates in the spring time when residents can bring clean, brush to a common area. All the rules and advice of the Anarchist Mountain Fire Department will be observed. The area is likely to be in the Kehoe / Wapiti Subdivision area; and Regal Ridge and the Fire Department will designate a specific area to use that is in a safe location.

The Society will make an announcement to Members, that on a given weekend (or perhaps two weekends in late March or early April) clean brush can be brought to this common area. The location will be manned by Society volunteers, to make sure only acceptable brush materials are deposited. No garbage, mattresses, plastics, solvents etc. etc will be accepted. Once a reasonable amount of material is assembled, it will be burned under the supervision of the Fire Dept and Regal Ridge employees.

We want your feed back on whether this is a good idea or not. This idea does **NOT in any way** interfere with your ability to conduct burns on your own property, within the rules as set out by our local Fire Department. If however, you feel this is helpful; for fire safety on the Mountain, please let us know your views (mckenney@xplornet.com) . If there is community support to do this we will organize it for next spring.

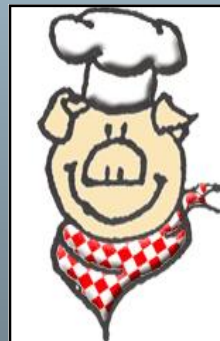
Winter - Moonlight Party

What could be a nicer way to spend a few hours on a moonlit night than having a cup of coffee, a grog of rum or a glass of wine with your neighbours. Add to that a full winter moon , and a bonfire and the perfect setting comes to mind.

The Society is looking for volunteers and a location to host a winter moon party. The idea is to host a cross country ski evening, or a snow shoe walk or just a get together at some Anarchist Mountain spot in January or February 2009. We'd choose a night when the moon is expected to be full - and the atmosphere mystical . This "pot-luck" party will a way to bring Members and residents together for some neighbourly fun. We might even get a few musical instruments going and stomp the night away.

Your comments are welcomed, as would be anyone interested in helping us organize this event. Call Mark at 2 5 0 - 4 9 5 - 4 5 9 2 o r mckenney@xplornet.com

Summer BBQ



Next June, we will be hosting our first (annual?) summer BBQ. The Board has agreed to purchase a side of beef or a pig for roasting, or maybe both! We will be looking for a place to host the event between now and next June. Our thinking is to hold the BBQ on a Saturday night, after Fathers Day next June.

One idea is to rotate the location to various members properties from year-to-year. This way folks can showcase the wonderful spot they live at ; yet not have to face any of the costs of hosting a BBQ.

If anyone wants to step up for the first location— give one of the Directors a call.

We will make sure the this a successful event and a chance for all your neighbours to enjoy an evening on the Mountain together.

● **Approached Fire Chief - Joe Simose and Regal Ridge to discuss whether setting up a common brush burning program might have some legs**

● **Winter and summer parties being planned**

Kelly Property - Tree Plantation Project

Encouraged by the success of our May 2008 tree planting project, the Society began chatting with Regal Ridge about their interest in reforesting some of their previously cutover areas. As things turn out, Adrian Erickson's company just recently purchased some land called "the Kelly property" at the eastern boundary of Anarchist Mountain.

With our success with planting 4,000 trees, the idea came up "why not 10 times that many trees next time?" Society President, Mark McKenney, was approached by K & C Nurseries in Oliver about the potential of a conservation project in 2009 or 2010. K & C in turn led us to speaking with Zanzibar Tree Planting, a BC based company that has commercially planted trees for the forest industry for the past 26 year. A field trip visit was arranged by Adrian Erickson, in July with K & C Nursery Manager, Robin Dawe and Tom Kafer, a site manager who works for Zanzibar to a potential site on Anarchist Mountain. The field trip proved promising.

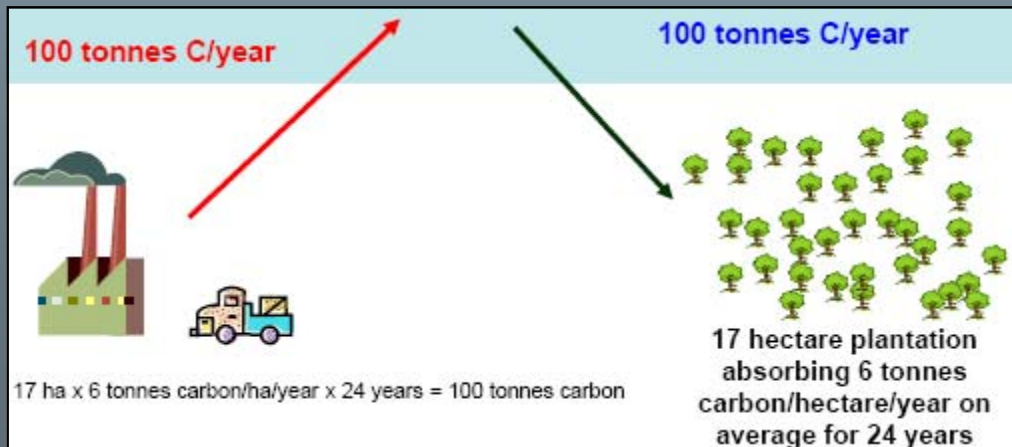


One area on mind is at about 3,400 ft. elevation, in a previously logged over area that has been used for cattle grazing for many years. Tom Kafer, of Zanzibar Tree Planting mentioned that cattle grazed areas require some extra attention to prepare these sites for proper tree growth. The soils get beaten down pretty hard from grazing, so a special plough would be brought in prior to planting to prepare the area, to give the seedlings a jump start. The area in mind is about 50 acres (26 Hectares) in size, with sparse fir and pine growth on it now. The plan would be to plant a mixed forest of seedlings consisting of fir, larch, pine and some aspen poplar, if the seedlings can be sourced. One of the features of this project is to determine the carbon sequestering benefit that such a project provides. Carbon sequestering is a term used by scientists for "binding up carbon from the atmosphere". As plants grow they convert carbon dioxide from the atmosphere into carbon (wood). Over time it is possible to calculate how much CO² is removed per hectare of trees planted. In effect the plantation becomes a filter that removed green house gases from the atmosphere.

This is tiny initiative in the battle against climate change and removal of green house gases; but it could be a model of how private businesses (K & C, Zanzibar, Regal Ridge) and their local Community are trying to make a difference. The Board of Directors of the AMCS endorsed the project as being a positive development and encouraged the partners to proceed with the idea. There will be no cost to the Society, our role is solely advisory and support oriented.

There are still some practical hurdles to overcome to make this project come alive. Regal Ridge has pledge the funding for the first phase of the project to do 26 Hectares. Now regal Ridge needs to agreed to order the seedlings, being a mix of species that are already native to Anarchist Mountain, so as not to disrupt any of the natural ecosystems of the area. Seed will be acquired, then seedlings planted at K & C in late 2008 or early 2009; to be ready as planting stock in March / April 2010.

Mark McKenney is looking for scientific contacts, though his network of environmental colleagues, for an independent researcher or University that may have an interest in monitoring the project. If any of you know someone that has expertise in this area please contact Mark.



● A effort in partnership with K & C Nurseries; Zanzibar Tree Planting and Regal Ridge

● A tree plantation is a recognized method of sequestering carbon

Anarchist Mountain Community Society

Membership Application - 2008

Yes, I wish to join as a member of the Anarchist Mountain Community Society. I enclose my annual family membership fee of \$50. The persons from our family that we wish to have listed as members are:

(names) _____

Signed: _____ Date: _____

Print Name: _____

Address : _____

Phone: _____ Email Address _____

I would be willing to participate in a committee ____ (yes/ no)

Cheques payable to Anarchist Mountain Community Society. No cash in the mail please or bring Application and payment to Founding Members meeting—Jan 16, 2008. Mail to : Anarchist Mountain Community Society, 324 Grizzly Place, Osoyoos, BC V0H 1V6 Info at 250-495-4519 or mckenney@explornet.com

● If your family isn't a member - why not join?

● If you have neighbours that may be interested send them the newsletter.

● We have 33 families signed up as of August 2008